

Airframe

Aircraft type :	Airbus A320-232
Serial Number :	2204
Effectivity:	004
Current Registration :	SU-SKB
SELCAL Code :	HQ-FP
Regulatory Authority :	ECAA
Date of Manufacture :	25-Jun-2004
Date of Transfer :	25-Jun-2004
Total airframe hours since new :	51204:00
Total airframe cycles since new :	27137
Max Operating Altitude (reference to AFM)	Slats and flaps retracted : 39800 ft Slats and/or flaps extended : 20000 ft
Manufacture delivery seating configuration (Refer Airbus Delivery Document)	180 Y/C
Current Seating Configuration	180 Y/C
Auxiliary Power Unit	Honeywell "GTCP131-9A"
Engine (2)	International Aero Engines (IAE) "V2527-A5"
Weight Variant As per SRM (ST1) and WBM	The aircraft has the design Weight Variant (WV) 012 MOD (23900, 30479)
Engine Thrust (lbs)	24,800 lbs

Aircraft Registration History

Operator name	Date	Registration	Flight Hours	Flight Cyc	Remarks
Tiger Airways (leased from Macquarie AirFinance)	25-Jun-2004	9V-TAA	0	0	Delivery to Singapore
White (leased from Macquarie AirFinance)	27-May-2009	CS-TQK	14947:00	6592	Registration at Portugal
Volaris (leased from Macquarie AirFinance)	14-Apr-2011	XA-VOU	18984:43	8200	Registration at Mexico
Volaris (leased from Macquarie AirFinance)	14-Feb-2012	N516VL	22306:16	9673	Registration at USA
IndiGo (leased from Macquarie Carlyle)	16-Jun-2015	VT-IDM	32577:25	14362	Registration at India
ITA Transportes Aéreos (leased from Macquarie Carlyle)	19-Jul-2021	PS-TCS	50215:58	26422	Registration at Barzil
Carlyle Aviation Partners	02-Mar-2022	N220CL	51199:04	27135	Registration at USA

ENGINES

	Engine 1	Engine 2	APU
Type/model	(IAE) "V2527-A5"	(IAE) "V2527-A5"	GTCP131-9A
Part Number			3800708-1
Serial Number of installed engines	V10282	V10340	P-4271
Thrust Rating:	24,800 lbs	24,800 lbs	
Manufacture date:	Feb-1998	Apr-1998	18-May-2009
Installation Date:	23-Jun-2021	23-Jun-2021	24-Apr-2021
Time since new	53371:00	42245:00	20442:00
Cycles since new	27496	28488	25434
Oil Type	Mobil Jet Oil II (MIL-L-23699C)	Mobil Jet Oil II (MIL-L-23699C)	Mobil Jet Oil II (MIL-L-23699C)
Stage	III	III	
Time since Repair	3960:00	2515:00	5218:00
Time since last shopvisit	3960:00	2515:00	5218:00
Cycles since last shopvisit	2159	1506	6130
Cycles remaining first limiter	6141	6638	O/C
Engine First Limiter (LLP)	LPT-STAGE 6 TURBINE AIR SEAL (LPT 4)	HPT - 1 OUTER (AIR) SEAL	O/C

LANDING GEARS

	MLG LH	MLG RH	NLG
Part number	201582001-030	201582002-030	D23589520-7
Serial number	M-DG-2581	M-DG-2582	B1747
Time since new	59036:00	59036:00	59036:00
Cycles since new	27450	27450	27450
Time since overhaul	21597:00	21597:00	21597:00
Cycles since overhaul	14237	14237	14237
Time between overhaul	20000	20000	20000
Date last overhaul	14-Apr-2014	14-Apr-2014	14-Apr-2014
Remaining Cyc. To O/H	5763	5763	5763
Date of Installation	26-Apr-2014	24-Apr-2014	26-Apr-2014
Next overhaul due date	25-Apr-2024	23-Apr-2024	25-Apr-2024

Effective date (gears first flight after overhaul)

OPERATIONAL WEIGHTS

	Kilograms	Pounds
Basic empty weight	42,208.43	93,053.67
Operating empty weight	43,178	95,192
Maximum taxi weight	77,400	170,638
Maximum take-off weight	77,000	169,756
Maximum landing weight	66,000	145,505
Maximum zero fuel weight	62,500	137,789

Last Weighing Report Date: - 15 Sep. 2022

By PlaneWeighs USA, Inc.

FUEL

Unit of capacity	Liters	Pounds	US Gallons	Kilograms
Total Fuel capacity	23,859	41,291	6,303	18,730
Fuel Flow & Fuel Qty Indication	Metric			Fuel Density: 0.785 (Ref. to AHM)



Up to Date 09-Oct-2022
A/C T.T. 51204:00 A/C T.C. 27137

Maintenance

Type of check	Interval			Last Accomplishment			Next Due			Rem				
	Calendar	Hrs	Cyc	Date	FH	FC	Date	FH	FC	Calendar	FH	FC		
A Check	6	Month	1000:00	1000	23/09/22	51202:35	27136	24/03/23	52202:35	28136	5.47	Month	998:35	999
1C Check	36	Month	12000:00	8000	19/05/21	50178:37	26412	18/05/24	62178:37	34412	19.31	Month	10974:37	7275
2C Check	72	Month	24000:00	16000	13/03/19	46471:06	23937	12/03/25	70471:06	39937	29.10	Month	19267:06	12800
4C Check	144	Month	48000:00	32000	19/05/21	50178:37	26412	19/05/33	98178:37	58412	127.31	Month	46974:37	31275
8C Check	288	Month	96000:00	64000	09/05/15	32577:25	14362	09/05/39	128577:2	78362	198.97	Month	77373:25	51225
6 Year Check	72	Month			19/05/21	50178:37	26412	19/05/27			55.31	Month		
12 Year Check	144	Month			09/05/15	32577:25	14362	09/05/27			54.97	Month		

As per MPD Rev. 47

Approved MP Rev. (00) ECAA Approval No. "ECAA/AW/AE/M0099"

Last A Check By CAS "USA" CRS No. 06092022PS-TCS-01 (CAS WO 06092022PS-TCS)

Aircraft is Equipped and Complying with the following Standards :

8.33 Khz Channel Spacing modification of VHF Radios & RMP's.	Yes	As Per Airbus Technical Delivery Document (Mod # 27214 & 27215).
ATC "Mode S" Transponder Elementary/Enhanced (ELS/EHS)	Yes	As Per Airbus Technical Delivery Document (Mod # 32467) and Installed ATC P/N 066-01127-1402.
Reduced Vertical Separation Minimum (RVSM).	Yes	As Per Airbus Technical Delivery Document (Mod # 25861).
BRNAV – RNP 5 , PRNAV – RNP 1	Yes	As Per AFM statement and Airbus Technical Delivery Document (Mod # 26999, 28382, 31897 & 32401).
ACAS II (TCAS change 7.1).	Yes	ASB A320-34-1533, Dated 08 Dec. 2016, WO#7415046 (Refer to IGO SB Status).
VOR (FM IMMUNE)	Yes	As Per Airbus Technical Delivery Document (Mod # 26187, 28669 & 33050).
MMR Multi Mode Receiver (FM IMMUNE)	Yes	As Per Airbus Technical Delivery Document (Mod # 27646, 28284 & 28495).
Enhanced Ground Proximity Warning System (EGPWS)	Yes	ASB A320-34-1412, Dated 02 April 2016, WO#7088647 and 965-1676-34-134, Dated 30 Nov. 2016, WO#7387736 (Refer to IGO SB Status).
ELT (Automatic Fixed ELT)	Yes	ELT P/N 95N6088
CKPT Door Re-enforcement	Yes	As Per Airbus Technical Delivery Document (Mod # 30050, 32090, 32511, 32735, 33037, 33268, 33691 & 33765).
Cockpit Door Surveillance System (CDSS)	Yes	As Per Airbus Technical Delivery Document (Mod # 32087, 32089 & 33821).
Fuel Tank Inerting System (FTIS)	Yes	AerSale STC STC-ST04010NY (STC-CST2018S06-11) (CTE-IOI80-01-320 Revision dated Apr 30, 2018)
Datalink (FANS / CPDLC)	Yes	CAS "USA" WO 06092022PS-TCS CRS No. 06092022PS-TCS-01 dated 23 Sep. 2022
Mode S ADS-B Out (DO-260B)	Yes	CAS "USA" WO 06092022PS-TCS CRS No. 06092022PS-TCS-01 dated 23 Sep. 2022
CVR Datalink Recording	Yes	CAS "USA" WO 06092022PS-TCS CRS No. 06092022PS-TCS-01 dated 23 Sep. 2022

Interior Configuration

Flight Deck	2 Crew Positions , 2 Observers Seats
Cabin	180 Y/C
Attendants seating	6 Cabin attendant positios
Galley	2 Galleys (G1 & G5) (Galley Type: ATLAS)
Lavatories	3 Lavatory compartment (LA, LE & LD)
Cabin Layout	Refer to - Cabin Layout & Emergency Equipment Locations
Cargo Holds	Standard
Cargo - Fire Compliance	Class C

Miscellaneous

Brake	MFG, UTAS (GoodRich) Corporation P/N. 2-1759-1
Main Wheel	MFG, UTAS (GoodRich) Corporation P/N. 3-1692-1
Nose wheel	MFG, UTAS (GoodRich) Corporation P/N. 3-1531-1
Hydraulic System	HyJet 4A plus IV
Fuel Central Tank	Integral

8

7

6

5

4

3

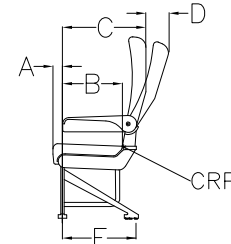
2

1

NOTES: UNLESS OTHERWISE SPECIFIED

1. INTERPRET DRAWINGS PER MIL-STD-130.
2. INTERPRET DIMENSIONS AND TOLERANCES PER ANSI Y14.5M.
3. AISLE WIDTH MUST SATISFY CFR 25.815: 15" OR MORE FROM FLOOR UP TO 25" HEIGHT AND 20" OR MORE ABOVE 25" HEIGHT.
4. SEATBACK BREAKOVER MUST BE RESTRICTED ON ALL SEATS BORDERING THE PASSAGEWAY TO PREVENT ENCROACHMENT INTO THE PROJECTED DOOR OPENING.
5. ALL SEATS MUST COMPLY WITH TSO C127, CFR 25.853, AND CONTAIN F.A.A. APPROVED UNDER-SEAT BAGGAGE RESTRAINT BARS.
6. INSTALL SEATS IN ACCORDANCE WITH AIRBUS A320 MAINTENANCE MANUAL.
7. ALL SEAT FUSELAGE STA (X). LOCATIONS ARE TO CENTERLINE OF FORWARD SEAT STUD.
8. ALL LAP BELTS MUST MEET REQUIREMENTS TSO C-22f.
9. FOR APPLICABLE SEATS, THE SEAT BACK BREAKOVER MIN 25 LBS. FORCE APPLIED IN HORIZONTAL DIRECTION.
10. AISLE WIDTH LEADING TO ALL TYPE I AND EMERGENCY EXITS MUST NOT BE LESS THAN 20 INCHES WIDE FROM FLOOR TO CEILING.
11. EMERGENCY EQUIPMENT REQUIREMENTS AND LOCATION IS THE RESPONSIBILITY OF THE INSTALLER.
12. AIRCRAFT WEIGHT AND BALANCE MUST BE RECALCULATED AFTER INTERIOR RECONFIGURATION TO DETERMINE NEW AIRCRAFT WEIGHT & C.G. LOCATION. REVISE AIRCRAFT WEIGHT & BALANCE RECORDS AS REQUIRED.
13. ALL INTERIOR ITEMS NOT SPECIFICALLY CALLED OUT IN THE BILLS OF MATERIALS ARE EXISTING IN THE AIRCRAFT.
14. REPITCH PSU'S AS REQUIRED TO MATCH NEW SEAT POSITIONS. REFERENCE AIRCRAFT MAINTENANCE MANUAL CHAPTER 25 FOR PSU REMOVAL/INSTALLATION PROCEDURES.
15. ACCOMPLISH DROP CHECK OF AIRCRAFT PASSENGER OXYGEN SYSTEM AFTER AIRCRAFT RECONFIGURATION PER MAINTENANCE MANUAL CHAPTER 35.
16. A MINIMUM DISTANCE FROM BULKHEAD TO FORWARD FACE OF SEAT BACKREST DIRECTLY AFT OF BULKHEAD IS 35 INCHES, IN ACCORDANCE WITH AC 25-17, SECTION 25.785, 81 (b) (3) PARAGRAPH (c) (2).
17. EACH STORAGE COMPARTMENT MUST BE PLACARDED FOR ITS DESIGN WEIGHT EXCEPT AS SPECIFIED IN FAA 25.1557.
18. OXYGEN MASK LINE MUST NOT BE FORWARD OF SEAT BACK IN FULLY RECLINED POSITION.
19. ALL SEAT BACKS AND BULKHEADS MUST HAVE "FASTEN SEAT BELT WHILE SEATED" PLACARD.
20. ALL SEATS MUST BE FIRE BLOCKED IN ACCORDANCE WITH CFR 25.853.
21. ALL LIFE VESTS MUST CONFORM TO TSO C-13.
22. "FASTEN SEAT BELT" AND "NO SMOKING" SIGNS MUST BE VISIBLE WHEN ILLUMINATED TO EACH PERSON SEATED IN THE PASSENGER CABIN.
23. EACH DISPOSAL RECEPTACLE MUST BE MARKED IN ACCORDANCE WITH FAA 25.791(c), ("NO CIGARETTE DISPOSAL").
24. LAVATORY DOORS MUST BE MARKED AND PROVISIONED IN ACCORDANCE WITH FAA 25.791(d), NO SMOKING AND CFR 25.853(g), ASH TRAYS.
25. PER NOTE 28 OF TCDS A28NM REV 46 AND LATER, FOR A320-211, -212, -214, -231, -232 AND -233 EQUIPPED WITH WING TIP FENCE (WTF), SUCH AIRPLANES ARE ELIGIBLE FOR MAXIMUM PASSENGER SEATING CAPACITY (MSPC) OF 180 PASSENGERS.
26. VERIFY/ENSURE BOTH THE FWD GALLEY AND THE FWD CROSS-AISLE RAILS AS WELL AS THE AFT CROSS-AISLE CURTAIN RAILS ARE NOT INSTALLED ON THE AIRCRAFT.

REVISIONS			
REV	DESCRIPTION	DATE	APPROVED
NC	INITIAL RELEASE.	APR 12, 22	



SEAT GEOMETRY (INCHES)	
DIM	ECONOMY
A	2.70
B	14.49
C	24.00
D	4.00
E	19.00

SEAT GEOMETRY DETAILS

QTY	PART OR IDENTIFYING NO.	NOMENCLATURE OR DESCRIPTION	MATERIAL/SPECIFICATION	ITEM NO.
1	3510A397-32-041	SEAT ASSY, RH TPL, NARROW CTR, HC	RECARO, CMM 25-23-97	14
1	3510A397-31-041	SEAT ASSY, LH TPL, NARROW CTR, HC	RECARO, CMM 25-23-97	13
3	3510A397-32-031	SEAT ASSY, RH TPL, STD, HC, FULL B/O, (STRETCHER)	RECARO, CMM 25-23-97	12
3	3510A397-31-031	SEAT ASSY, LH TPL, STD, HC, FULL B/O, (STRETCHER)	RECARO, CMM 25-23-97	11
1	3510A397-32-131	SEAT ASSY, RH TPL, IAT, EXIT	RECARO, CMM 25-23-97	10
1	3510A397-31-131	SEAT ASSY, LH TPL, IAT, EXIT	RECARO, CMM 25-23-97	9
1	3510A397-32-121	SEAT ASSY, RH TPL, IAT, EXIT, NO RECLINE	RECARO, CMM 25-23-97	8
1	3510A397-31-121	SEAT ASSY, LH TPL, IAT, EXIT, NO RECLINE	RECARO, CMM 25-23-97	7
1	3510A397-32-021	SEAT ASSY, RH TPL, STD, HC, NO TABLE, NO RECLINE	RECARO, CMM 25-23-97	6
1	3510A397-31-021	SEAT ASSY, LH TPL, STD, HC, NO TABLE, NO RECLINE	RECARO, CMM 25-23-97	5
22	3510A397-32-011	SEAT ASSY, RH TPL, STD, HC	RECARO, CMM 25-23-97	4
22	3510A397-31-011	SEAT ASSY, LH TPL, STD, HC	RECARO, CMM 25-23-97	3
1	3510A397-32-111	SEAT ASSY, RH TPL, IAT FRONT	RECARO, CMM 25-23-97	2
1	3510A397-31-111	SEAT ASSY, LH TPL, IAT FRONT	RECARO, CMM 25-23-97	1
-1		LOPA - 180Y PASSENGERS		

PARTS LIST

THE INFORMATION CONTAINED IN THIS DRAWING IS THE PROPERTY OF E4C TECHNOLOGIES. DISCLOSURE OR REPRODUCTION IN WHOLE OR PART WITHOUT THE WRITTEN PERMISSION OF E4C TECHNOLOGIES IS STRICTLY PROHIBITED. SPECIFICATIONS, ARTWORKS, DRAWINGS, AND THE LIKE ASSOCIATED WITH THIS PROJECT ARE DEEMED THE PROPERTY OF E4C TECHNOLOGIES.

UNLESS OTHERWISE SPECIFIED DIMENSIONS ARE IN INCHES.		DO NOT SCALE DRAWING			
.X = ±.1 .XX = ±.03 .XXX = ±.010		DRAWN BY: A. MACIAS DATE: APR 12, 22			
ANGLES ± 0° - 30°		CHECK BY: I. ALAMEDDIN DATE: APR 12, 22		TITLE: LOPA - 180Y PASSENGERS A320-232 AIRCRAFT MSN 2204, N220CL	
MATERIAL: NA		ENGR. APPROVAL: I. ALAMEDDIN DATE: APR 12, 22		SIZE: D 62M36	
E4C W.O. NO. 2601		ENGR. MGR: F. MACIAS DATE: APR 12, 22		DWG. NUMBER: E2601-001	
		SCALE: NONE		REV: NC	
		FILE ID# E2601-001		SHEET 1 OF 3	

8

7

6

5

4

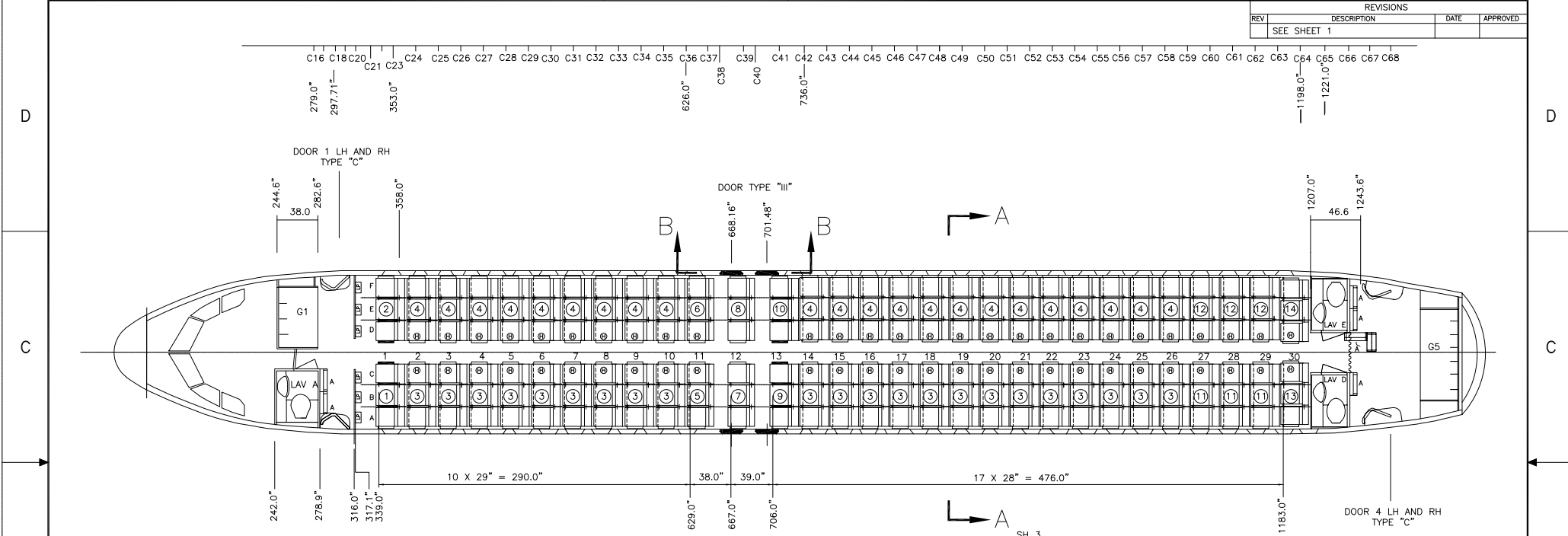
3

2

1

8 7 6 5 4 3 2 1

REVISIONS			
REV	DESCRIPTION	DATE	APPROVED
SEE SHEET 1			



RECARO SEATS		
ROW	L/H PART NUMBER	R/H PART NUMBER
1	3510A397-31-111	3510A397-32-111
2	3510A397-31-011	3510A397-32-011
3	3510A397-31-011	3510A397-32-011
4	3510A397-31-011	3510A397-32-011
5	3510A397-31-011	3510A397-32-011
6	3510A397-31-011	3510A397-32-011
7	3510A397-31-011	3510A397-32-011
8	3510A397-31-011	3510A397-32-011
9	3510A397-31-011	3510A397-32-011
10	3510A397-31-011	3510A397-32-011
11	3510A397-31-021	3510A397-32-021
12	3510A397-31-121	3510A397-32-121
13	3510A397-31-131	3510A397-32-131
14	3510A397-31-011	3510A397-32-011
15	3510A397-31-011	3510A397-32-011
16	3510A397-31-011	3510A397-32-011
17	3510A397-31-011	3510A397-32-011
18	3510A397-31-011	3510A397-32-011
19	3510A397-31-011	3510A397-32-011
20	3510A397-31-011	3510A397-32-011
21	3510A397-31-011	3510A397-32-011
22	3510A397-31-011	3510A397-32-011
23	3510A397-31-011	3510A397-32-011
24	3510A397-31-011	3510A397-32-011
25	3510A397-31-011	3510A397-32-011
26	3510A397-31-011	3510A397-32-011
27	3510A397-31-031	3510A397-32-031
28	3510A397-31-031	3510A397-32-031
29	3510A397-31-031	3510A397-32-031
30	3510A397-31-041	3510A397-32-041

-1 LOPA - 180Y PASSENGERS

THE INFORMATION CONTAINED IN THIS DRAWING IS THE PROPERTY OF E4C TECHNOLOGIES. DISCLOSURE OR REPRODUCTION IN WHOLE OR PART WITHOUT THE WRITTEN PERMISSION OF E4C TECHNOLOGIES IS STRICTLY PROHIBITED. SPECIFICATIONS, ARTWORKS, DRAWINGS, AND THE LIKE ASSOCIATED WITH THIS PROJECT ARE DEEMED THE PROPERTY OF E4C TECHNOLOGIES.

E4C TECHNOLOGIES
Engineering. Construction. Innovation.

SIZE	CODE NO.	DWG. NUMBER	REV
D	62M36	E2601-001	NC
SCALE: NONE	FILE ID#	E2601-001	SHEET 2 OF 3

8 7 6 5 4 3 2 1

8

7

6

5

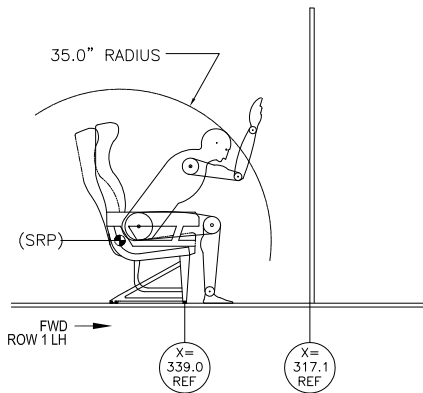
4

3

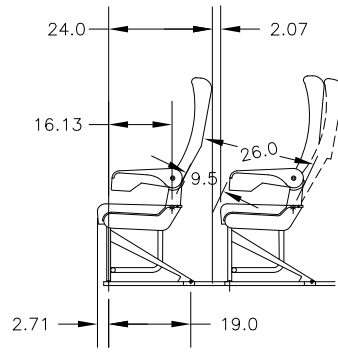
2

1

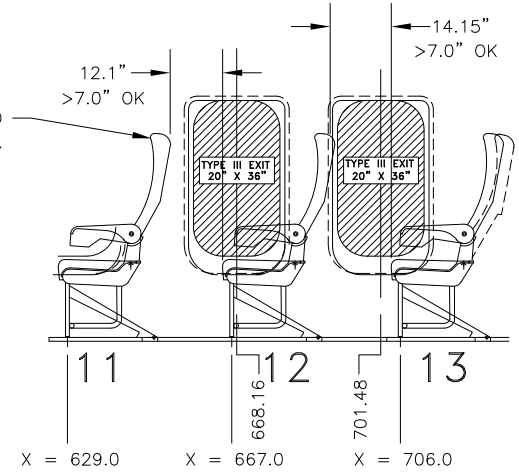
REVISIONS			
REV	DESCRIPTION	DATE	APPROVED
1	SEE SHEET 1		



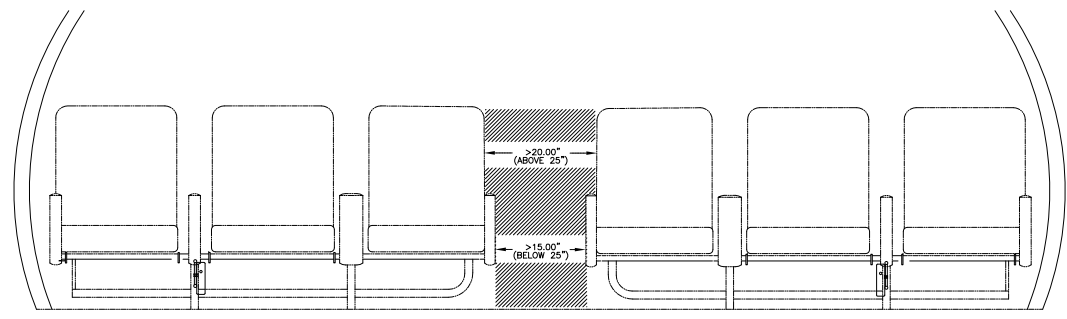
HEAD STRIKE CLEARANCE 16



RECLINE NOT TO EXCEED 4.0°.



VIEW B-B



VIEW A-A 3

THE INFORMATION CONTAINED IN THIS DRAWING IS THE PROPERTY OF E4C TECHNOLOGIES. DISCLOSURE OR REPRODUCTION IN WHOLE OR PART WITHOUT THE WRITTEN PERMISSION OF E4C TECHNOLOGIES IS STRICTLY PROHIBITED. SPECIFICATIONS, ARTWORKS, DRAWINGS, AND THE LIKE ASSOCIATED WITH THIS PROJECT ARE DEEMED THE PROPERTY OF E4C TECHNOLOGIES.

E4C TECHNOLOGIES
Engineering. Construction. & Project.

SIZE: CADE NO. D 62M36	DWG. NUMBER: E2601-001	REV: NC
SCALE: NONE FILE 107	E2601-001	SHEET 3 OF 3

8

7

6

5

4

3

2

1