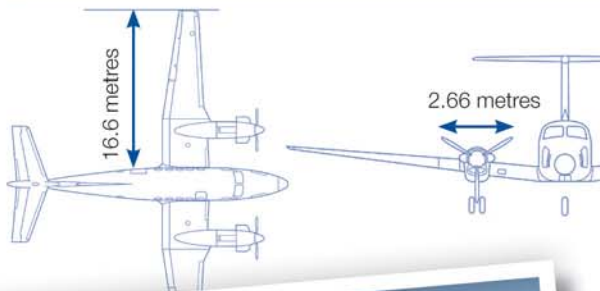
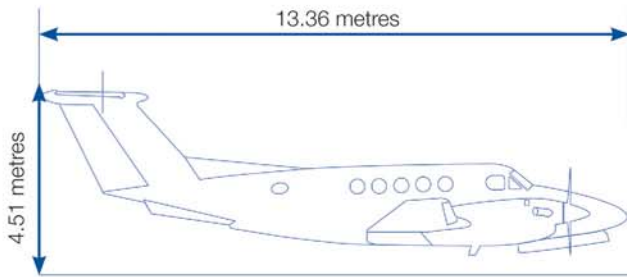


CareFlight King Air B200 Fast Facts

The King Air B200 is an American built aircraft and is widely used for aeromedical work. Powered by two gas-turbine engines, it has four-bladed propellers, a pressurised cabin and retractable undercarriage. The King Air is an all weather, day/night capable aircraft.

CareFlight operates a fleet of King Air B200 aircraft. These aircraft have been extensively modified to undertake aeromedical missions.

The King Air B200 has wide cargo doors to allow for easy movement of patients into and out of the planes; electro-pneumatic loading systems for quicker, safer and smoother stretcher loading; special medical flooring; storage units; and oxygen systems. It also has purpose-designed radios and navigation systems for CareFlight's long flights to access patients in very remote locations. The cabin is configured to accommodate two stretcher patients, two seated patients and the aeromedical team.



ENGINES:

2 x Pratt and Whitney PT6A - 42 gas turbines, delivering (850 SHP) each

FUEL USAGE:

Fuel capacity 3600lbs 1630kg
 Jet A-1 refined kerosene
 Fuel burn 600 lbs/hr

MEASUREMENTS:

Total length 13.36 metres
 Total height 4.51 metres
 Rotor diameter 2.66 metres
 Max weight 5710kg

EQUIPMENT:

- Weather radar
- GPS navigation system
- Dual autopilot
- Full Instrument Flight Rules (IFR) navigation suite: ILS, VOR, DME, NDB and RNAV
- VHF and HF aviation radios
- 3G mobile phone and Satellite phones

MODIFICATIONS:

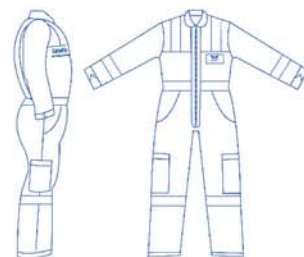
- Ram Air Recovery System
- Short field enhancement
- Dual aft body strakes
- Hartzell/Raisbeck quiet turbofan
- Propeller kit with auto feather
- Brake De-Ice System
- Freon air conditioning
- High flotation landing gear

SPEED:

Max speed: 570 km/hr (308 knots)
 Cruising speed: 485 km/hr (255 knots)
 Max range: 1900 km (1100 NM)
 Max altitude: 10,668 m (35,000 ft)
 Endurance: 6 hrs

CREW:

3 members:
 Pilot
 Nurse
 Doctor





CareFlight is an aeromedical charity. Our mission is to save lives, speed recovery and serve the community.

CareFlight uses helicopters, aeroplanes, jets and road ambulances to bring a hospital level of care to patients.

Our critical care doctors and nurses are specially trained in pre-hospital and transport medicine.

They care for severely injured people who need emergency treatment at the scene of the accident. They also look after seriously ill people who need to be moved between hospitals.

CareFlight doctors and nurses care for over 5,000 patients every year.

About CareFlight

For more information go to www.careflight.org

www.careflight.org



Come and join the conversation

IN YOUR CAPITAL CITY

GPO Box 9829

All correspondence to:

4 Barden Street, Northmead, NSW 2152

CareFlight Headquarters

Online www.careflight.org

Mail CareFlight, GPO Box 9829, In Your Capital City

Phone 1800 655 876

Here's how to donate:

DONATE NOW

CareFlight

The next *life* we save could be yours



King Air B200 Aircraft Information Card